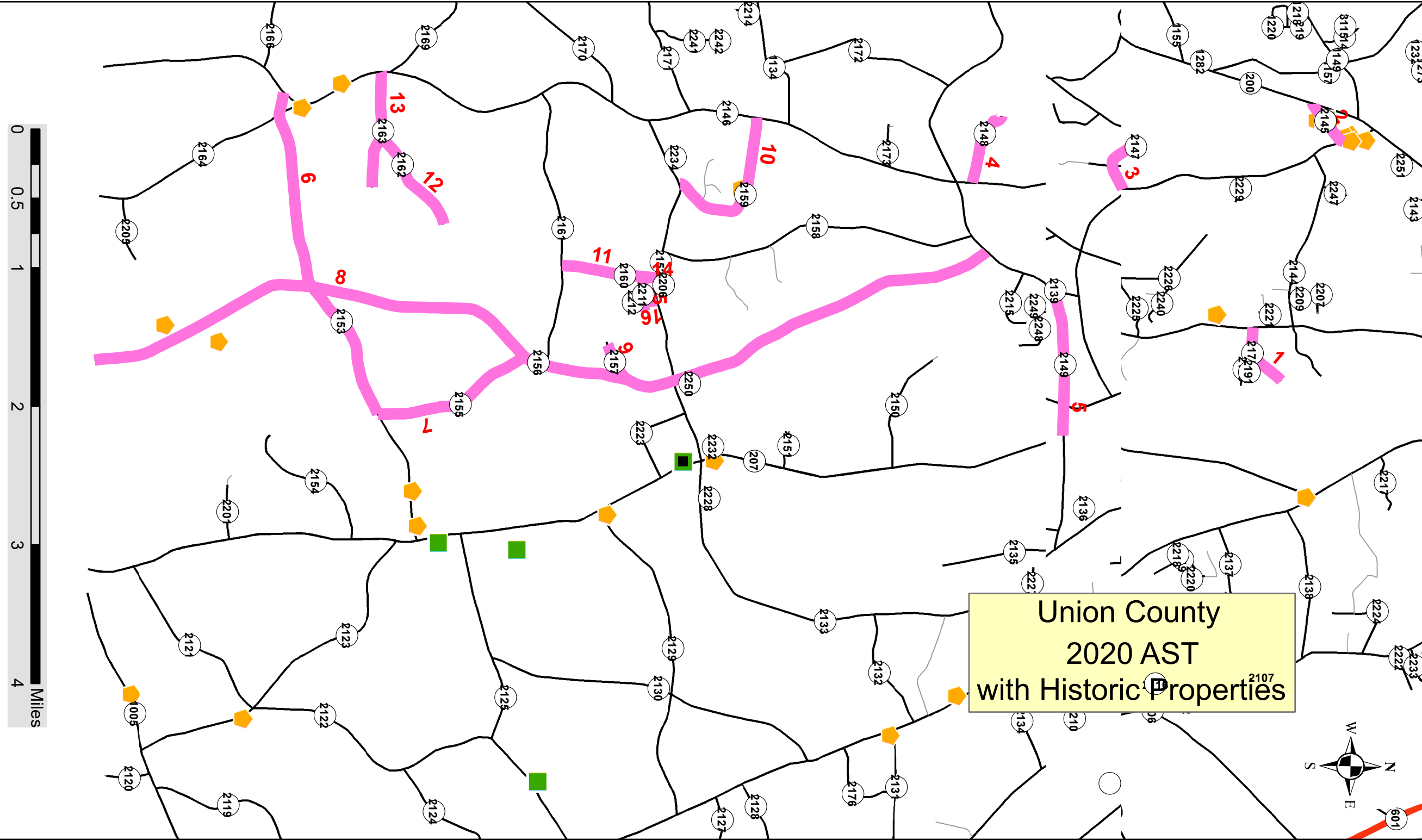


PROJECT NO.	SHEET NO.	TOTAL NO.
2020CPT.10.07.20902	1	4

## SUMMARY OF QUANTITIES

PROJECT NO	COUNTY	MAP NO	ROUTE	DESCRIPTION	BEGIN MP	END MP	LANES	FINAL SURFACE TESTING REQUIRED	WARM MIX ASPHALT REQUIRED	LENGTH	WIDTH	1803500000-E	1838000000-E	2143000000-E	4589000000-N	4413000000-E		
												ASPHALT SURFACE TREATMENT, DOUBLE SEAL	EMULSION FOR ASPHALT SURFACE TREATMENT	BLOTTING SAND	TRAFFIC CONTROL	WORK ZONE ADVANCE/GENERAL WARNING SIGNING		
												MI	FT	SY	GAL	TON	LS	SF
2020CPT.10.07.20902	Union	1	G.M. BROOME RD (SR 2175)	FROM GRIFFITH RD (SR 2139) TO END OF MAINTENANCE	0.00	0.48	2	NO	NO	0.48	20	5,632	3,098	20.00	1	40		
<b>TOTAL FOR MAP NO. 1</b>												<b>0.48</b>		<b>5,632</b>	<b>3,098</b>	<b>20.00</b>	<b>1</b>	<b>40</b>
2020CPT.10.07.20902	Union	2	CARMEL CHURCH RD (SR 2145)	FROM (SR 2146) PLYLER MILL RD TO NC 200 S	0.00	0.36	2	NO	NO	0.36	16	3,379	1,859			40		
<b>TOTAL FOR MAP NO. 2</b>												<b>0.36</b>		<b>3,379</b>	<b>1,859</b>			<b>40</b>
2020CPT.10.07.20902	Union	3	AUGUSTUS RD (SR 2147)	FROM PLYLER MILL RD (SR 2146) TO EOM	0.00	0.44	2	NO	NO	0.44	18	4,646	2,556			40		
<b>TOTAL FOR MAP NO. 3</b>												<b>0.44</b>		<b>4,646</b>	<b>2,556</b>			<b>40</b>
2020CPT.10.07.20902	Union	4	AYCOTH RD (SR 2148)	FROM PLYLER MILL RD (SR 2146) TO EOM	0.00	0.55	2	NO	NO	0.55	16	5,163	2,839			40		
<b>TOTAL FOR MAP NO. 4</b>												<b>0.55</b>		<b>5,163</b>	<b>2,839</b>			<b>40</b>
2020CPT.10.07.20902	Union	5	BUFORD SHORTCUT RD (SR 2149)	FROM GRIFFITH RD (SR 2139) TO NC 207	0.00	1.05	2	NO	NO	1.07	20	12,555	6,776			40		
<b>TOTAL FOR MAP NO. 5</b>												<b>1.07</b>		<b>12,555</b>	<b>6,776</b>			<b>40</b>
2020CPT.10.07.20902	Union	6	TRINITY CHURCH RD (SR 2153)	FROM PLYLER MILL RD (SR 2146) TO (SR 2155)	0.00	2.50	2	NO	NO	2.5	19	27,867	15,327			83		
<b>TOTAL FOR MAP NO. 6</b>												<b>2.5</b>		<b>27,867</b>	<b>15,327</b>			<b>83</b>
2020CPT.10.07.20902	Union	7	W.M. GRIFFIN (SR 2155)	FROM AUSTIN RD (SR 2156) TO TRINITY CHURCH RD (SR 2153)	0.00	1.18	2	NO	NO	1.18	20	13,845	7,615			40		
<b>TOTAL FOR MAP NO. 7</b>												<b>1.18</b>		<b>13,845</b>	<b>7,615</b>			<b>40</b>
2020CPT.10.07.20902	Union	8	AUSTIN RD (SR 2156)	FROM SC STATE LINE TO GRIFFITH RD (SR 2139)	0.00	6.99	2	NO	NO	6.99	19	77,915	42,853			295		
<b>TOTAL FOR MAP NO. 8</b>												<b>6.99</b>		<b>77,915</b>	<b>42,853</b>			<b>295</b>
2020CPT.10.07.20902	Union	9	GAY RD (SR 2157)	FROM AUSTIN RD (SR 2156) TO EOM	0.00	0.29	2	NO	NO	0.29	20	3,403	1,871			40		
<b>TOTAL FOR MAP NO. 9</b>												<b>0.29</b>		<b>3,403</b>	<b>1,871</b>			<b>40</b>
2020CPT.10.07.20902	Union	10	CLARKSVILLE CAMPGROUND RD (SR 2159)	FROM PLYLER MILL RD (SR 2146) TO SANDY RIDGE (SR 2152)	0.00	1.17	2	NO	NO	1.17	20	13,728	7,550			40		
<b>TOTAL FOR MAP NO. 10</b>												<b>1.17</b>		<b>13,728</b>	<b>7,550</b>			<b>40</b>
2020CPT.10.07.20902	Union	11	WALT GAY RD (SR 2160)	FROM SANDY RIDGE (SR 2152) TO CIRCLE S RANCH (SR 2161)	0.00	0.69	2	NO	NO	0.69	19	7,691	4,230			40		
<b>TOTAL FOR MAP NO. 11</b>												<b>0.69</b>		<b>7,691</b>	<b>4,230</b>			<b>40</b>
2020CPT.10.07.20902	Union	12	CROWDER RD (SR 2162)	FROM STARNES CEMETERY (SR 2163) TO EOM	0.00	0.79	2	NO	NO	0.79	20	9,269	5,098			40		
<b>TOTAL FOR MAP NO. 12</b>												<b>0.79</b>		<b>9,269</b>	<b>5,098</b>			<b>40</b>
2020CPT.10.07.20902	Union	13	STARNES CEMETERY (SR 2163)	FROM PLYLER MILL RD (SR 2146) TO EOM	0.00	0.85	2	NO	NO	0.85	20	9,973	5,485			40		
<b>TOTAL FOR MAP NO. 13</b>												<b>0.85</b>		<b>9,973</b>	<b>5,485</b>			<b>40</b>
2020CPT.10.07.20902	Union	14	ERICA DR (SR 2206)	FROM SANDY RIDGE RD (SR 2152) TO EOM	0.00	0.11	2	NO	NO	0.11	20	1,291	710			40		
<b>TOTAL FOR MAP NO. 14</b>												<b>0.11</b>		<b>1,291</b>	<b>710</b>			<b>40</b>
2020CPT.10.07.20902	Union	15	ALISA RD (SR 2211)	FROM WALT GAY RD (SR 2160) TO EOM	0.00	0.25	2	NO	NO	0.25	19	2,787	1,533			40		
<b>TOTAL FOR MAP NO. 15</b>												<b>0.25</b>		<b>2,787</b>	<b>1,533</b>			<b>40</b>
2020CPT.10.07.20902	Union	16	DELMAR GRIFFIN RD (SR 2212)	FROM SANDY RIDGE RD (SR 2152) TO ALISA RD (SR 2211)	0.00	0.10	2	NO	NO	0.1	20	1,173	645			40		
<b>TOTAL FOR MAP NO. 16</b>												<b>0.1</b>		<b>1,173</b>	<b>645</b>			<b>40</b>
<b>TOTAL FOR PROJ NO. 2020CPT.10.07.20902</b>												<b>17.82</b>		<b>200,317</b>	<b>110,045</b>	<b>20.00</b>	<b>1</b>	<b>938</b>
<b>GRAND TOTAL</b>												<b>17.82</b>		<b>200,317</b>	<b>110,045</b>	<b>20.00</b>	<b>1</b>	<b>938</b>

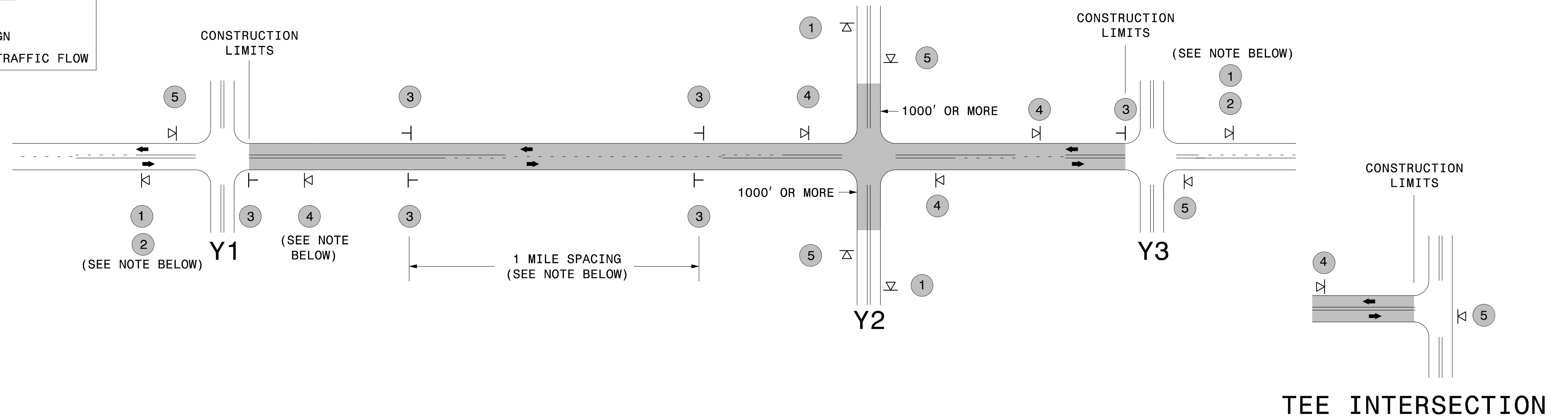
Note: The Contractor shall not park equipment or work outside of the existing right of way in Historic Areas.



# SIGNING FOR ASPHALT SURFACE TREATMENT

**LEGEND**

- ▷ PORTABLE SIGN
- └ STATIONARY SIGN
- ← DIRECTION OF TRAFFIC FLOW



## MAINLINE (-L-) SIGNING

## -Y- LINE SIGNING

SIGNING NOTES AND PLACEMENT PER DIRECTION	1	 W20-1 48" X 48"	- PLACE 1000' PRIOR TO BEGINNING OF CONSTRUCTION LIMITS. ONLY USED ON -Y- LINES IF RESURFACING LIMITS EXTEND 1000' ALONG -Y- LINE.	<p><b>STATIONARY SIGNING NOT REQUIRED FOR THE FOLLOWING -Y- LINE CONDITIONS:</b></p> <ol style="list-style-type: none"> <li>1) LESS THAN 1000' OF RESURFACING ALONG -Y- LINE</li> <li>2) SUBDIVISION ROADS</li> <li>3) DEAD END ROADS</li> </ol> <p>WHEN PAVING/CONSTRUCTION ACTIVITIES PROCEED ACROSS AN UNSIGNED -Y- LINE, PORTABLE ADVANCE WARNING SIGNS SHALL BE USED ALONG THE -Y- LINE AS SHOWN BELOW. REMOVE UPON COMPLETION OF WORK.</p> <div style="display: flex; justify-content: space-around;"> <div style="text-align: center;">                   W20-1                  48" X 48"             </div> <div style="text-align: center;">                   W20-7 A                  48" X 48"             </div> </div> <p>PLACED 500' IN ADVANCE OF FLAGGER.</p> <p>PLACED 250' IN ADVANCE OF FLAGGER.</p>
	2	 W7-3qP 24" X 18"	- SIGN #2 ONLY USED WHEN RESURFACING LIMITS ARE 2 OR MORE MILES IN LENGTH. ROUND UP TO THE NEAREST WHOLE NUMBER. DO NOT USE FRACTIONAL OR DECIMAL NUMBERS.	
	3	 W8-7 48" X 48"	- ALTERNATE THE FOLLOWING TWO SIGNS: - STARTING WITH "LOOSE GRAVEL" (W8-7) FOLLOWED BY "UNMARKED PAVEMENT". - PLACE INITIALLY AT THE CONSTRUCTION LIMITS AND SPACED 1 MILE APART THEREAFTER.	
		 SP 48" X 48"	- AT TEE INTERSECTIONS INSTALL INITIALLY 0.5 MILE FROM INTERSECTION AND SPACE 1 MILE APART THEREAFTER.	
	4	 SP 13106 48" X 48"	- THESE ARE FOR -Y- LINES THAT ARE "THROUGH" ROADWAYS. DEAD END AND SUBDIVISION ROADS ARE NOT "THROUGH" ROADWAYS. - INSTALL 500' +/- FROM EACH -Y- LINE APPROACH AS SHOWN ABOVE. - FOR MULTIPLE -Y- LINES THAT ARE SEPARATED BY 0.25 MILES OR LESS, TREAT AS A SINGLE UNIT AND INSTALL WITHIN 500' OF EACH APPROACH. - A MAXIMUM OF 2 SIGN SETS PER MILE. DO NOT INSTALL WHEN -Y- LINES ARE WITHIN 0.5 MILES FROM "END ROAD WORK" SIGN.	
5	 G20-2 A 48" X 24"	PLACE 500' FOLLOWING THE END OF CONSTRUCTION LIMITS OR AS SHOWN WHEN WORK ENDS AT A 3-WAY TEE INTERSECTION.		

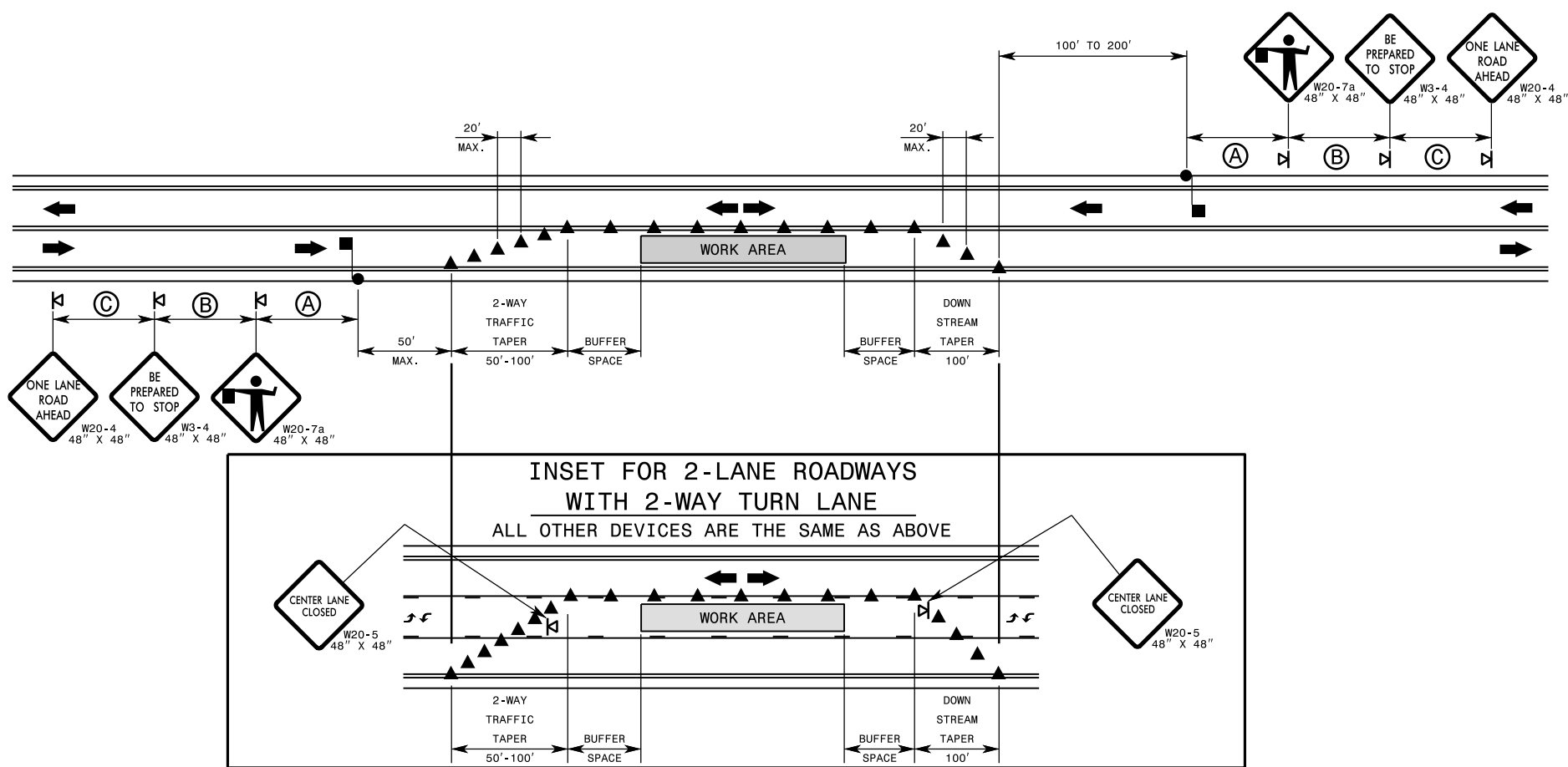
THE ABOVE SIGNS ARE ALL THAT ARE REQUIRED FOR A CONTRACTOR TO BEGIN A RESURFACING CONTRACT. ANY ADDITIONAL SIGNS REQUESTED BY NCDOT DIVISIONS SHALL BE INSTALLED WITHIN 7 BUSINESS DAYS OF THE START OF CONTRACT WORK.

**MAPS LESS THAN 2 MILES**

FOR AST RESURFACING MAPS WITH CONSTRUCTION LIMITS LESS THAN 2 MILES IN LENGTH, USE A STATIONARY "LOOSE GRAVEL" SIGN AT THE BEGINNING CONSTRUCTION LIMIT FOLLOWED BY AN "UNMARKED PAVEMENT" SIGN MIDWAY THROUGH AND AN "END ROAD WORK" SIGN AT THE END CONSTRUCTION LIMIT.



**ADVANCE WARNING SIGNS FOR 2-LANE ROADWAY ASPHALT SURFACE TREATMENT**



**GENERAL NOTES FOR FLAGGING OPERATIONS**

- 1- REFER TO RSD. 1101.11, SHEETS 1 & 4, FOR "L" DISTANCE AND SIGN SPACING.
- 2- INSTALL LANE CLOSURES WITH THE TRAFFIC FLOW, BEGINNING WITH DEVICES ON THE UPSTREAM SIDE OF TRAFFIC.
- 3- REMOVE LANE CLOSURES AGAINST THE TRAFFIC FLOW, BEGINNING WITH DEVICES ON THE DOWNSTREAM SIDE OF TRAFFIC.
- 4- PLACE CONES THRU THE WORK AREA AT THE MAXIMUM SPACING EQUAL IN FEET TO 2 TIMES THE POSTED SPEED LIMIT.
- 5- EXTEND LANE CLOSURES AT THE BUFFER SPACE SUCH THAT STOPPING SIGHT DISTANCE IS PROVIDED TO THE FLAGGER (REFER TO RSD. 1101.11, SHEET 2).
- 6- DO NOT STOP TRAFFIC IN ANY ONE DIRECTION FOR MORE THAN 5 MINUTES AT A TIME.
- 7- DRUMS OR SKINNY DRUMS MAY BE USED IN LIEU OF CONES. REFER TO RSD. 1180.01 FOR SKINNY DRUM REQUIREMENTS.
- 8- USE FLAGGERS TO CONTROL TRAFFIC AT INTERSECTIONS AFFECTED BY THE LANE CLOSURE. SUPPLEMENT FLAGGERS LOCATED AT INTERSECTIONS WITH FLAGGER AHEAD SIGNS (W20-7a) PLACED APPROXIMATELY 250 FT. IN ADVANCE OF THE FLAGGER. FOR SIGNALIZED INTERSECTIONS PLACE SIGNALS IN THE FLASH MODE AND USE LAW ENFORCEMENT.
- 9- REFER TO THE CURRENT MUTCD FOR FLAGGER CONTROL, REQUIREMENTS, AND PROCEDURES.
- 10- DO NOT EXCEED A 1 MILE LANE CLOSURE LENGTH UNLESS OTHERWISE SHOWN IN THE TMP OR AS DIRECTED BY THE ENGINEER.

- 11- IF VEHICLE QUEUES WILL REACH WITHIN 15' OF EITHER SIDE OF ACTIVE RAILROAD TRACKS, PROVIDE A UNIFORMED LAW ENFORCEMENT OFFICER OR FLAGGER TO PREVENT VEHICLES FROM STOPPING WITHIN THE GRADE CROSSING. PROVIDE OFFICER OR FLAGGER EVEN IF AUTOMATIC WARNING MEASURES ALREADY EXIST.

**GENERAL NOTES FOR PILOT CAR OPERATIONS**

- 1- USE PILOT CARS WHEN DIRECTED BY THE ENGINEER.
- 2- IF ROADWAY WIDTH IS LESS THAN 22 FEET (EOP TO EOP), CONES MAY NOT BE REQUIRED ALONG WORK AREA, AND AT THE DISCRETION OF THE ENGINEER, CONES MAY BE OMITTED ALONG THE WORK AREA IF USING A PILOT CAR.
- 3- CONES ARE ALWAYS REQUIRED IN THE UPSTREAM AND DOWNSTREAM TAPERS.
- 4- MOUNT SIGN G20-4 "PILOT CAR FOLLOW ME" AT A CONSPICUOUS POSITION ON THE REAR OF THE PILOT VEHICLE.
- 5- DO NOT INSTALL MORE THAN ONE (1) MILE OF LANE CLOSURE, MEASURED FROM THE BEGINNING OF THE MERGE TAPER TO THE END OF THE LANE CLOSURE.
- 6- ADVISE RESIDENTS AND BUSINESSES WITHIN THE LANE CLOSURE LIMITS ABOUT METHODS OF SAFE EGRESS AND INGRESS FROM DRIVEWAYS DURING FLAGGING AND PILOT CAR OPERATIONS.

